



JANUARY 2010

www.wittonlodge.org.uk

PERRY COMMON MATTERS

PUBLISHED BY THE WITTON LODGE COMMUNITY ASSOCIATION AND THE PERRY COMMON GUIDE NEIGHBOURHOOD

WE WANT YOUR IDEAS

When the new and improved Perry Common Community Hall opens in Spring 2010, we want to make sure that we run activities that you will want to take part in....so we need you to tell us what those activities should be.

You might be thinking that Perry Common needs more social activities such as tea dances or bingo evenings or what about some keep fit and yoga classes? Maybe you want to learn how to use a computer or how to cook healthy foods....what ever you want to see, we want to know. We will use your suggestions to shape the services we offer when the centre re-opens next year.

To give us your ideas you can either pop into the office at Sycamore Court on Buxton Road, phone us on 0121 382 1930, email terriann@wittonlodge.org.uk or go to the Community Hall section of the website (www.wittonlodge.org.uk) and fill in the online form.

As an added incentive, one lucky person who gets in touch with us will win £30 of vouchers of their choice.

WORK STARTS ON PERRY COMMON HALL



An artist's impression of the new Community Hall and inset, the site as it is now.

IN THIS ISSUE



BONFIRE NIGHT VIP!
Lord Mayor & Lady Mayoress pay a visit



THE LIGHT FANTASTIC
Perry Common's Christmas Lights' Switch on



COLLEGE HIGH'S GOT TALENT
Talent Competition at College High

AND MUCH MORE...

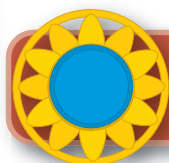
Work has started on giving Perry Common Community Hall a half a million pound refit thanks to funding from Witton Lodge Community Association, Advantage West Midlands and Birmingham City Council as part of a city wide pilot project to transfer some of the city's assets to community organisations.

Over the last twelve months, architects from Urban Design have been working with local residents to draw up the plans for the enhancement of the centre and in October, we finally got the go ahead to start!!! The work, which is scheduled to be completed in early spring 2010, will see the existing hall given a much needed facelift including new training kitchen and 'community shop' which will provide information for the residents of Perry Common. A brand new extension is also being built which will provide

office space for Witton Lodge Community Association and other local service providers.

It is hoped that the centre will become the 'hub' for Perry Common, offering a range of activities including social and lifestyle events and classes as well as both formal and informal training and volunteering opportunities for the residents of Perry Common.

You can keep up to date with the building works by visiting our website www.wittonlodge.org.uk and clicking on the Community Hall link on the left.



To have an article or advert placed in the next issue of Perry Common Matters, please contact Terriann Box: terriann@wittonlodge.org.uk or 0121 382 1930.

COMMUNITY NEWS

New Faces at Witton Lodge Community Association

Over the last six months, there have been a few new faces at Witton Lodge Community Association and unfortunately we have also had to say farewell to a number of our directors and volunteers.

We welcome Terriann who has joined the staff team and works three days a week providing administration support to Andy and the Directors of the Board. Also joining Witton Lodge Community Association are Lydia and Mark Gaston who offered to take up the spaces on the Board left by Narinder Sohal and Sheila Barker who both stood down recently. We would like to thank Narinder and Sheila for all their hard work and commitment to the Association and wish them luck in their future endeavours.

We have also had to say a fond farewell to Marion Pritchard who has been an active member of the community in Perry Common for over 20 years. Marion, who was one of the founding members of the Association back in 1994 and who has spent two stints on the board as well as being an active member of the Perry Common Guide Neighbourhood Team, has decided to hang up her notepad and minutes for the last time. We would like to wish Marion well and thank her for the dedication she has shown to making Perry Common a place to be proud of.



SPECIAL VISITORS ON BONFIRE NIGHT!

On November 5th last year the Lord Mayor and Lady Mayoress came to see and hear for themselves how Perry Common has been transformed over the last 15 years with the residents playing a major role in the regeneration.

They heard from some of the service providers in the area including the Police, Fire Service, Birmingham City Council and the local churches. A short tour of the estate followed and both were impressed with the thought and dedication that had so obviously gone into the redevelopment.

They left saying that Perry Common feels like a very special place and have promised to visit again soon.

WITTON LAKE & STREAMS POLLUTION CONCERN

Severn Trent Water is currently investigating pollution problems in the streams that flow into Witton Lakes, which are believed to be a result of drainage misconnections at properties in the area.

Problems often occur when householders, builders and plumbers modernise or extend properties and inadvertently connect washing machine or sink waste water pipes and sometimes toilets to the surface / rain water drain rather than a foul water drain.

The combined volume of waste water from a number of misconnected properties can be considerable and not only significantly affects the water quality in our streams and lakes, but also causes an unpleasant smell that is a nuisance to the residents of properties near to the streams, particularly in periods of hot and dry weather.

These problems can be avoided if a little thought is given by residents when undertaking work on their property. Are you sure that the waste water pipes at your property are discharging to the correct drain? If they are connected into the same drain as the roof downpipe then it is most likely your waste water will



eventually discharge to the watercourse and contribute to the pollution problem.

We would ask that, if you know your property has had improvement works carried out in recent years, you check your own connections and make any necessary alterations if these are found to be misconnected.

If you would like information or advice please contact

- Environment Agency 0800 60 70 80
- Severn Trent Water 0800 783 4444

TRIPPING THE LIGHTS - FANTASTIC!



I know it doesn't seem like 12 months since it happened but here we are again telling you about Perry Common's "Christmas Light's Switch On".

"Ring of Sound", Perry Common's own community choir, opened the proceedings with a couple of carols and then Police Inspector Lorraine Leavesley did us the honour of officially switching on the lights, after the obligatory countdown of course.

The crowds that had come along and braved the cold sang along enthusiastically to some well-known carols

and then we all departed to thaw out at the Assembly of God Pentecostal Church with hot drinks and mince pies!

Thanks to all those involved in making the event possible including Witton Lodge Community Association who once again sponsored both the lights and the party afterwards!

We would also like to send a special thanks to the Assembly of God Church for hosting the event and their kind donation of £100 towards the cost of the event.

DUCKLING WATCH



Duckling Watch has been set up to be a visible presence in Witton Lakes to not only deter potential destruction of the water birds, their nests and eggs but also the possible abuse and murder of their babies and parent birds who will try to protect them.

Volunteers and officers (when possible) walk around the park in groups wearing specifically marked high visibility waistcoats (provided) at different times of the day between February and September.

Our role is non confrontational or intimidating but involves monitoring (cameras provided) and reporting any issues to the Watch leader.

The time commitment of volunteers depends both on individual choice and the numbers taking part.

However much time you will be able to give your help would be invaluable!

The next series of watch's will start at the end of February 2010 when the birds begin to build their nests.

If you would like to help or just need more information then please contact Linda Hines on 07960 386 252 (I will call you straight back as it's a mobile number) or email Linda.hines@blueyonder.co.uk

Please help us protect those who cannot protect themselves!



St Martins Lunch Club

St Martins Lunch Club is committed to helping elderly people in the community. On Tuesdays and Fridays we provide meals for members, and most Thursdays we take clients out on excursions to places of interest. In addition we offer advice and signposting facilities.

On the 24th October 2009 St Martins Lunch Club held a charitable evening with entertainment and a buffet and managed to successfully raise £450 towards new equipment for the clients.

The price of meals is £3.50 (additional costs for transport if applicable). Anyone interested in learning more about what we do please feel free to call Ron or Gareth on 0121 382 7555 or pop into the centre on the Ring where we can show you what we do.

A LETTER FROM COLLEGE HIGH SPECIALIST ARTS SCHOOL

Dear Parents, Carers and Stakeholders,

Thank you for your support over the last five years - it has been five years on 1st December that I joined The College High Specialist Arts School - we have gained many awards and accolades. This year we have the best results in the school's history, success in Ofsted, will gain Academy Status on 1st January 2010 and are on track to become one of the most improved educational institutions in Birmingham and the UK.

2010 will see us open as North Birmingham Academy and our future success will continue. With the support of our sponsors EACT, the success story of The College High Specialist Arts School will continue to be built upon.

We have student representatives at the National Parliament, opened the Christmas Celebration in Birmingham and are asked regularly to represent Birmingham, the Midlands and the UK at activities and events; this is a credit to the staff, students and stakeholders who consistently offer support and face any challenge that may arise.

2009 has been a fantastic year, I am sure that 2010 will be more successful and will bring many more achievements. Well done to all.

The College High Specialist Arts School is a good place to be - North Birmingham Academy will be an exceptional place to be.

Best wishes

Mrs K L Popratnjak

BIRD AND BAT BOXES



Year 7 students are currently working on designs for some new bird and bat boxes to be made for 'The Friends of Witton Lakes'.

Mr McNair is the teacher leading the project and the first batch of boxes should be ready for early spring 2010.

Linda Hines visited the school to talk to the students about the project. We look forward to seeing the progress of the boxes.

FEELING SAFER

STOPPING SHED CRIME

Perry Common Neighbourhood Watch have been advised that there has been an increase in burglaries from sheds in the local area and is doing what it can to stop further escalation of the problem.

Consequently we have purchased some battery operated shed alarms and are offering them to residents for the subsidised price of £4.00 each. Because of the reduced cost, only one alarm per household is allowed. Perry Common

Neighbourhood Watch can hold no responsibility for the future maintenance of the alarm or replacement of batteries.

If you would like to purchase a shed alarm then please contact Linda on 07960386252 or leave a message on the Witton Lodge Community Association Office number: 0121 382 1930. Please leave your name, address and contact number and we will ensure an alarm is delivered to you, at a mutually convenient time.



CAN YOU HELP THE WATCH OUT?



Perry Common Community Watch is struggling for members right now. We are a group of residents who patrol our streets with our local Police Community Support Officers to try to reassure the community and give advice as and when needed.

If you may be able to help in any way or would just like to find out more then please contact Linda on 07960 386252 (Linda.hines@blueyonder.co.uk).

ALCOHOL: THE FACTS

- Alcohol is measured by units
 - One unit of alcohol is the amount that a healthy liver can break down in one hour
 - The formula to calculate the number of units in an alcoholic drink is:
Volume of the drink (ml) x the strength (%abv) ÷ 1000
 - For example a 750ml bottle of wine at 14% volume equals 10.5 units
 - Whilst a pint of lager (568ml) at 5.2% volume equals 3 units
 - The Department of Health guidelines for safe drinking limits are:
Men ~ 3-4 units or less daily
Women ~ 2-3 units or less daily
 - It is advisable to have at least 2 alcohol free days per week to give your body a rest from the effects of alcohol
 - Regularly drinking more than the recommended daily amount of units puts your health and welfare at risk
 - In addition, alcohol can cause:
 - Your skin to dehydrate which causes premature ageing
 - Red, blotchy nose
 - Bloodshot / puffy eyes
 - Red or flushed face
 - Red veins around the nose and cheeks
 - Furthermore, alcohol is heavy in calories. For example:
 - A glass of white wine (175ml) = as many as 130 calories
 - A glass of red wine (175ml) = as many as 119 calories
 - A lager or beer (pint) = as many as 392 calories
 - A cider (pint) = as many as 574 calories
 - An alcopop (bottle) = as many as 228 calories
- The calories in alcohol are metabolised first by the body, ahead of burning fat, whilst those not used turn to fat; so the more you drink the more likely you are to put on weight and develop a beer belly (and ladies, don't think this just applies to the men) The knock on health effects of being overweight include heart disease, diabetes, high blood pressure and stroke

ERDINGTON SAFER DRINKING STRATEGY

Working in the community tackling drugs and alcohol misuse

Do you have any drug or alcohol issues that you would like to discuss? Fancy trying Auricular Acupuncture? Come along to our 'Drop In Centre'. You can find us at Kingstanding Leisure Centre, Dulwich

Road, Kingstanding, Birmingham B44 OEW every Monday from 10am - 11am. For further information contact: Kay on 07747 442237, Gail on 07595 466759 or Adam on 077727 10418

PEOPLE POWER IN ACTION!



Earlier this year a scheme was launched inviting residents to vote for the area that they thought should undergo some "tender loving care" by offenders who had received orders from the court to do what used to be called "Community Service" but has been renamed "Community Payback".

Well, the good news is that Witton Lakes and Brookvale Park won the Birmingham vote! The national launch of the project took place at Witton Lakes in July with Louise Casey (as pictured), from the "Justice Seen Justice Done" government department doing the

official bit. Work then started to enhance the area including trimming hedges, painting the benches and fencing.

In November 20,000 daffodil bulbs were planted by "The Friends of Witton Lakes" and "Duckling Watch" coming together with Community Payback to do the hard work!

A big thank you goes to all those who voted or have helped in any way.



Dear residents,

Thank you for your continued support in making your area one of the safest neighbourhoods in Erdington constituency.

For those of you who may not have heard, West Midlands Police is undergoing a massive change program that will strategically align our services to constituency boundaries. Other changes are afoot including the introduction of the Policing Pledge, however all of the changes ahead are designed to improve the service we provide to you.

Your officers are committed to delivering a standard of service any member of our family would be proud to receive.

With this in mind I wanted to take this opportunity to explain that we have added a number of services locally to improve the service we provide to you.

- An appointment system has been made available - You can select a convenient appointment time to attend the police station or an officer attend your address if required. This service is available 7 days a week.
- A dedicated Anti Social Behaviour vehicle - Neighbourhood officers are available to respond to your ASB issues which can then be followed up with partner agencies to assist any further action/resolution required.
- Mobile Phone Watch - Our PCSOs whilst on patrol will help to identify motorists illegally using handheld mobile phones whilst driving and issue warning letters to reduce offences and make our roads safer.
- This links into Community Speedwatch that we are launching in the New Year - community members will identify roads where speeding motorists cause concern for the community and then work with our Neighbourhood Teams to identify motorists and issue warning letters, similar to the yellow card, red card warning system used in football. This scheme has been highly successful in other parts of urban Birmingham. Interest has been considerable already and if you would like to be an active member of your future Community Speedwatch group, please contact your local Community Watch members, Witton Lodge Community Association or any member of your Perry Common neighbourhood team - training will begin very soon at a place near you.

Just a couple of messages from me to help reduce disorder in your community.

For those of you who perhaps do not know or realise it is an offence to buy alcohol for any persons under 18 years old. It is a criminal offence and in partnership with the local authority we do operate Test Purchase operations in the community to catch offenders.

Alcohol undoubtedly clouds people's judgements, especially young people who we would not want to be exposing themselves to the harm alcohol can inflict at their tender age. You are not being unfair or a spoilsport by refusing to buy it for young people, you could actually be preventing them from coming to harm, or on few occasions, causing harm to someone else or their property.

Please act responsibly or you risk facing the possible consequences of being caught and fined more than the price of the bottle you may have just bought for them!

As the nights become longer and darker, please can I remind you to secure your properties when you go out, lock doors and windows, keep valuables out of sight and leave a light on, better still get a timer switch:

Neighbourhood team officers will come to your home & provide property marking, give out timer switches and other crime reduction goodies to help keep you safe. Just contact your local neighbourhood team on 0845 113 5000 extension 7851 6227. They will assess your home safety, supplying the necessary home & vehicle crime reduction items completely free of charge - Erdington Community Safety Partnership have purchased a number of "Keep Safe" items that we can distribute to individual households.

Fire
doesn't care who it kills.

To book a free fire safety check in your home by your local firefighters, freephone

0800 389 5525
or register via www.wmfs.net

We take your safety seriously.
WEST MIDLANDS FIRE SERVICE

THE BRAMBLES CHILDREN'S CENTRE



The Brambles Children's Centre on Hastings Road is one of many Sure Start Children's Centres in Birmingham and offers activities, information and advice. All of the services the centre offers are free or very affordable, and open to any family with a child under five living in or around Kingstanding and Perry Common.

Parents, carers, grandparents or anyone looking after a pre-school child may use the centre. Services are also offered to expectant parents during pregnancy.

The centre offers a variety of activities and services such as "Stay and Play" groups, holiday playschemes, toy library, home visits and family support and Parent Craft classes.

One of our very popular activities is the "Coffee Morning" which has recently been increased to twice weekly!

The Wednesday Coffee Morning runs from 10 am to 12 noon in the centre. The new Friday Coffee Morning runs from 10 am to 12 noon and is aimed at the under 25's in the 610 Centre on Kingstanding Road.

To get in touch with the centre please drop in or: Call: 0121 675 2183 Email: info@bramblesccham.org.uk

We are open from 9 am until 5 pm Monday to Thursday and 9 am to 4.30 pm on Fridays.

Wilson Stuart School and Sports College

Wilson Stuart School and Sports College on Perry Common Road would like to open their doors to Young Disabled People in the community.

We run clubs most nights after school and if you are 6-18yrs old you can come to Sports clubs, ICT clubs, Cookery clubs and Swimming clubs.

If you are interested please contact Rachael Hesson (OSHL coordinator) or Sarah Loveday (Head of PE) on 0121 373 4475. We look forward to hearing from you and we must demand a parent or guardian attends the first club in order to discuss any medical issues or behavioural concerns.

COLLEGE HIGH'S GOT TALENT

On Wednesday 14th October The College High Specialist Arts School hosted the 2009 College High's Got Talent competition.

It was a fantastic show with many entertaining and diverse acts which included dancing, singing, beat-boxing, rapping, piano playing and even a stand up comedian! There were also guest acts from the Gifted and Talented Dance groups and a surprise performance from the teachers who performed two dances to Grease songs.

We had guest judges who included Mrs Popratnjak, Mr Steve Dourass from Macmillan Cancer support, Mr McCook one of our school governors, Mrs Hart from attendance, and our very own Simon Cowell - Mr Seager. After great

performances from everyone the judges had the hard task of choosing a winner. The winners were Aaron Lakha 8 SAH and Connor Stanley 8 GM who performed a dance inspired by Chris Brown and Michael Jackson. They won vouchers for the IMAX cinema. The ticket sales also managed to raise over £300 for Macmillan Cancer Support.

Well done to everyone who performed an act on the evening and a big thank you to the wonderful host Miss Lexia Tomlinson 11 SBC.

URBAN DEVOTION

Urban Devotion Birmingham have always been about serving the community and providing opportunities for children and young people to be all that they can be. What we really love doing is celebrating the positive contribution that children and young people make to their community. An obvious example of this is the recently re-opened Underground Youth Centre (St Martin's Youth & Community Centre). Young people played a pivotal role in getting the Underground ready for re-opening - even cleaning and painting the interior! It seemed highly appropriate that two local young people - Reiss and Renay Cooper - cut the ribbon at the launch event back in September along with Councillor Peter Kane. The event was a huge success with over 200 people visiting and discovering what The Underground can offer to children and young people from Perry Common and beyond.

The Lord Mayor of Birmingham recently honoured some of the young people involved in UDB with a United Streets of Birmingham Community Award. As a team we are really proud of this award as it recognises the amazing value of young people where so often they are written off and only seen in a bad light. UDB could not exist without the incredible efforts of young people in serving other children and young people in the community.

In these tough financial times UDB are also committed to

supporting adults who are out of work. We don't have a magic wand but work in partnership with other local groups to connect people with training and employment opportunities. Please get in touch if you are interested.

What's On:

UDB run a range of activities in schools and across the community including:

- The Underground, School Years 4-6 Monday 3:30-5:00pm
- The Underground, School Years 7-9 Monday 5:30-7:00pm
- The Underground, School Year 10 - Age 19 Monday 7:30-9:00pm
- V Project (alternative education for ages 16-21) Thursday 12:00-4:00pm
- Kids Club, Primary School Aged Children Every other Thursday 6:00-7:00pm (at TLCC, 148 Turpits Lane)

We also run a range of mini programs focusing on skill development around media and sports. For more details please contact us.

Urban Devotion Birmingham, 148a Turpits Lane, B23 5DX. Tel: 0121 350 9370. Email: office@urbandevotion.org. Web: www.urbandevotion.org

St. Margaret Mary's Bikeability

St Margaret Mary's school has participated in the "Bikeability" programme for the first time this term. At school we have produced a school travel plan; this travel plan incorporates a number of ideas connected with the health and safety of all our pupils.

Our plan is to build some cycle/scooter storage in the spring term 2010, but before that we felt it important to make sure our oldest pupils were safe on the road. Therefore the Bikeability programme took place, firstly in September and then later on in November. This involves firstly the children bringing their bikes to school with their cycle helmets. The children then inspected their bikes and the course leader explained

what the children needed to do to keep their bikes safe on the road. Secondly the children rode their bikes on the playground doing some difficult manoeuvres. Only after passing this part of the programme did the course leader take them out onto the local streets to practice the skills they had been taught.

Everyone received a certificate and the children really enjoyed their training. Henry in Y6 said: "After the training I felt more confident cycling on the road". Another participant Kaylen said: "I didn't realise all the checks you are supposed to do to keep your bike safe".

A productive and worthwhile activity for everyone.

Kids' Page

No Bake Fudge Cake with Marshmallows

Ingredients:

400g Belgian Cooking Milk Chocolate
1 x 397g tin Nestle Carnation Caramel
150g Marshmallows,

To decorate:

Decorate: 100g Mini Marshmallows

Method:

1. Partially line a 20cm x 20cm square baking tin with baking paper. Use 2 strips of paper, overlap each of them so they hang over all four sides of the tin.
2. Break the chocolate into pieces and place in a microwave-safe bowl. Add the Carnation Caramel and stir.
3. With the help of an adult, microwave on medium-high for 1 minute, remove from the microwave and stir. Return the bowl to the microwave and continue to cook until the chocolate has melted. Stir until the mixture is smooth, add the marshmallows, mixing well.
4. Quickly pat the mixture into the lined tin and finish by sprinkling the top with mini marshmallows. Do your best to really stick them into the fudge so they set while it is in the fridge. Chill for 3 hours, then lift out of the tin with the help of an adult, cut into cubes and enjoy!

Many thanks to Sainsburys.co.uk for this recipe!

Q: When do ghosts usually appear?

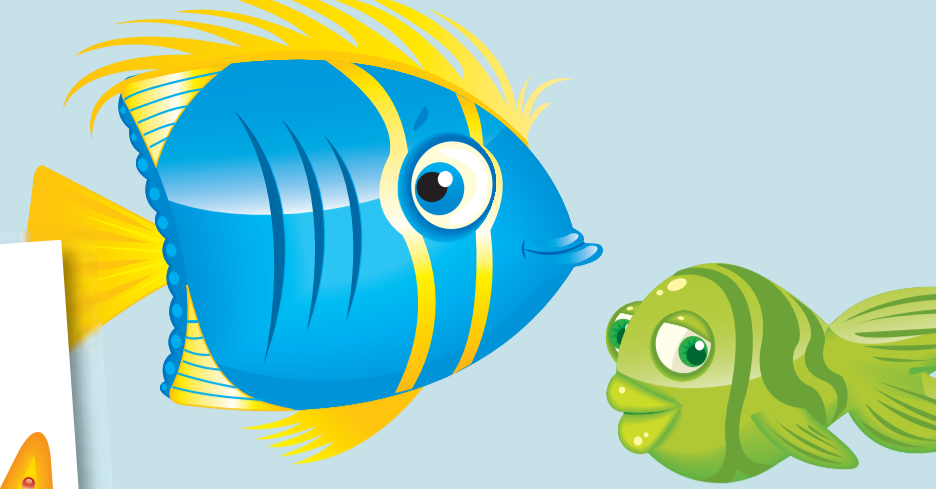
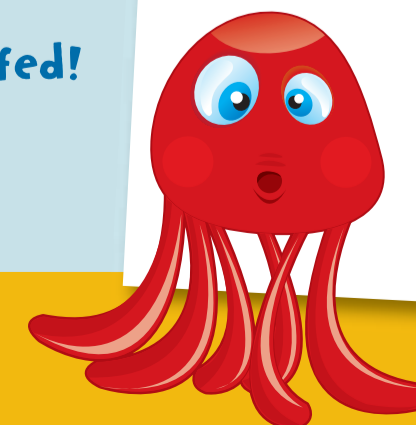
A: Just before someone screams.

Q: What do you call a fairy who doesn't take a bath?

A: Stinkerbell

Q: What did the teddy bear say when he was offered dessert?

A: No thanks, I'm stuffed!



Q: How do you catch a squirrel?

A: Climb up a tree and act like a nut.

Q: What do sheep do on sunny days?

A: Have a baa - baa - cue!



Word Search

A	I	U	P	S	P	R	I	N	G
W	S	N	R	D	P	Q	K	W	L
A	T	U	S	O	C	O	L	D	Z
U	W	T	N	G	M	U	S	J	S
T	D	M	J	S	E	N	Y	S	W
U	S	H	A	I	H	K	C	U	I
M	H	C	L	F	O	I	O	M	N
N	S	N	R	S	T	G	N	M	T
K	R	A	I	N	H	A	Q	E	E
D	M	J	Q	O	V	P	W	R	R
L	B	O	E	W	I	N	D	F	E

Autumn
Cold
Hot
Rain
Snow
Spring
Sunshine
Summer
Wind
Winter

SMALL GRANTS MAKE A BIG DIFFERENCE!

Over the last 12 months Witton Lodge Community Association has granted over £2,500 to community projects in Perry Common. These have included providing storage for play equipment, helping to increase safety of play areas, equipment for a local school, camping trips, a junior warden scheme and a safari trip.

So far the funding scheme has been a major success and Witton Lodge Community Association has received extremely positive feedback. St Martin's Church Parents and Toddler Group said:

"St Martin's Church Parents and Toddler Group would like to thank Witton Lodge Community Association's Small Grants for enabling us to take 20 children and their parents to West Midlands Safari Park. We had a fantastic day.

We then had the opportunity to take the children to meet Santa. It was so exciting we took a sleigh ride to the North Pole where each child was able to meet Santa and have a photo with him before choosing themselves a toy from his workshop. We then shared our picnic before getting the coach home. It was a fantastic day!"

Another successful project was a camping trip which was organised by Perry Common Pentecostal Church. Witton Lodge Community Association funded part of the overall cost. Here's what they had to say:

"We stayed at the Top End Farm, Little Staughton, Nr Cambridge, providing us with a country setting and when the sun shone, open space for plenty of football for



the boys and the girls to run round screaming, laughing and doing what girls do (being a nuisance to boys).

The camp was intended to provide some of the boys and girls with their first ever holiday, but it also helped the children to understand a sense of 'Community', the washing-up after meals being the biggest challenge. Also came the realisation that families share the same problems and issues; such as the lack of money to provide the enjoyable things in life. In a similar way we could not afford theme parks, cinema trips and the like but we had great fun making our own entertainment including the 'Last Night Concert Party'."

If you would like more information about the Small Grants Fund offered by Witton Lodge Community Association, please check out our website www.wittonlodge.org.uk and click on the Small Grants tab on the left hand side. Alternatively please contact Terriann Box at Witton Lodge Community Association on 0121 382 1930.

PERRY COMMON'S VERY OWN CHOIR

Yes it's us again, appealing for new members!

Our numbers have dwindled lately and we desperately need to increase our membership. You wouldn't have to audition and there would be no cost to yourselves.

We welcome adults and children (over the age of 6) regardless of experience or ability. You may think

that you can't sing but the majority of us thought that too.

We rehearse every Wednesday from 4.30 – 5.30pm. So if you'd like to join us to see for yourself or need more information then please contact either Linda on 07960 386252 linda@wittonlodge.org.uk or terriann@wittonlodge.org.uk.

USEFUL CONTACTS

Witton Lodge Community Association

Terriann Box - 0121 382 1930
terriann@wittonlodge.org.uk

Perry Common Guide Neighbourhood

Terriann Box - 0121 382 1930
terriann@wittonlodge.org.uk

Perry Common Community Watch

07960 386 252
perry_common-communitywatch@yahoo.co.uk

Perry Common J & I School

0121 464 3863

St Margaret Mary RC School

0121 464 6355

College High School

0121 373 1647

Wilson Stuart School

0121 373 4475

Fly Tipping Hot Line

0121 303 1112

Bramble Children's Centre

0121 675 2183

St Martin's Church

0121 382 7555

St Margaret Mary RC Church

0121 373 0069

Turfpits Lane Christian Centre

(YMCA) 0121 373 3564

Perry Common Assembly of God Church

0121 373 7406

College Road Neighbourhood Office

0121 303 1880

Police Non-Emergencies

0845 113 5000

Crime Stoppers

0800 555 111

Graffiti Hotline

0121 303 8701

Anti-Social Behaviour Hotline

0121 303 1111

Barratt in Perry Common, Birmingham

We can help you move to your new home!

Dovedale Park – a stunning development of 2 bedroom apartments and 2, 3 & 4 bedroom houses

For more information about our homes and schemes available to help you move, call us today.

Jackdaw Road, Birmingham, West Midlands B23 5BP

Showhomes and sales office usually open daily 10am - 5pm, please call to confirm

Call 0121 384 7391

Central sales call 0121 585 5605

www.barratthomes.co.uk/dovedalepark

Come & take a look around our showhomes



BARRATT
HOMES
built around you